
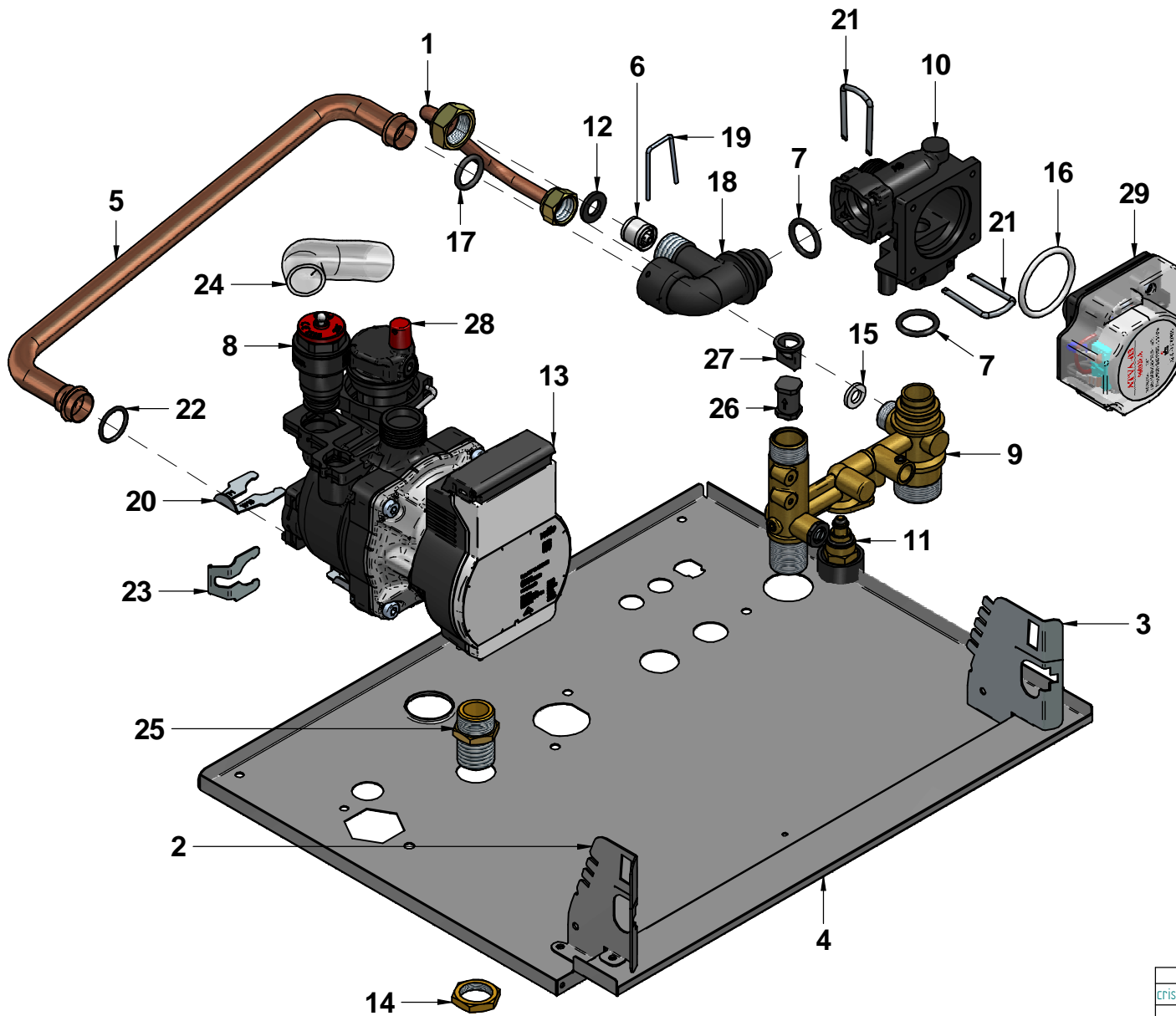



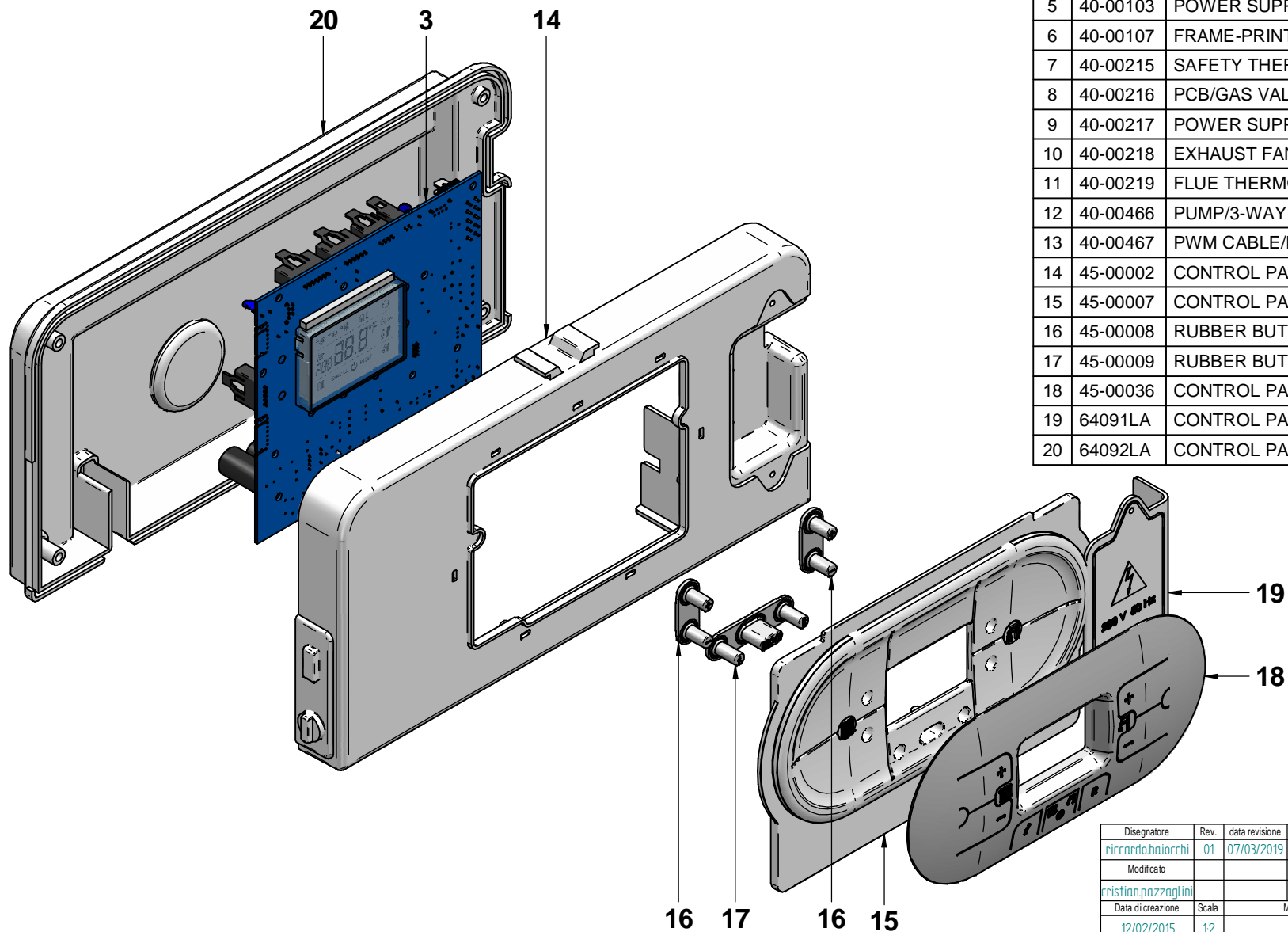
N°	Code	Description	Qty
1	12-02129	CHASSIS	1
2	15-00996	TRANSFORMER FIXING PLATE	1
3	15-01048	EXPANSION VESSEL FIXING BRACKET	1
4	15-01105	EXPANSION VESSEL BOTTOM BRACKET	1
5	15-01281	ROOM-SEALED CHAMBER TOP	1
6	15-01282	CASING LEFT SIDE PANEL	1
7	15-01283	CASING LEFT SIDE PANEL	1
8	15-01290	CASING FRONT PANEL	1
9	15-01295	CONTROL PANEL LEFT SIDE BRACKET	1
10	15-01296	CONTROL PANEL LEFT SIDE BRACKET	1
11	15-01327	WALL FIXING BRACKET	1
12	15-01443	CONDENSATE SIPHON FIXING PLATE	1
13	15-01553	ROOM-SEALED CHAMBER BOTTOM PLATE	1
14	35-00109	ABS CASING	1
15	35-00110	ABS CASING COVER	1
16	35-00114	INSULATION LEFT PANEL	1
17	35-00115	INSULATION FRONT PANEL	1
18	35-00116	ABS LOWER GRILL PANEL	1
19	35-00118	RAIN PROTECTION COVER - RAL 7035	1
20	35-00119	INSULATION RIGHT PANEL	1
21	43290LA	ALUMINIUM ADHESIVE FRONT SIDE	1
22	65-00393	KEY KIT	1

Disegnatore	Rev.	data revisione	Autore revisione	Descrizione revisione
cristian.pazzaglini				
Modificato				
cristian.pazzaglini				
Data di creazione	Scala	Materiale	Sp.	Peso (Kg)
28/06/2017	16			6031.202
Note				
Descrizione completa R2K 34 RAIN "COMBI-TECH" ERP V3 MET - CS R2				
				tecnologia nel calore dal 1959
Codice			Revisione	
A991A372B502			00	



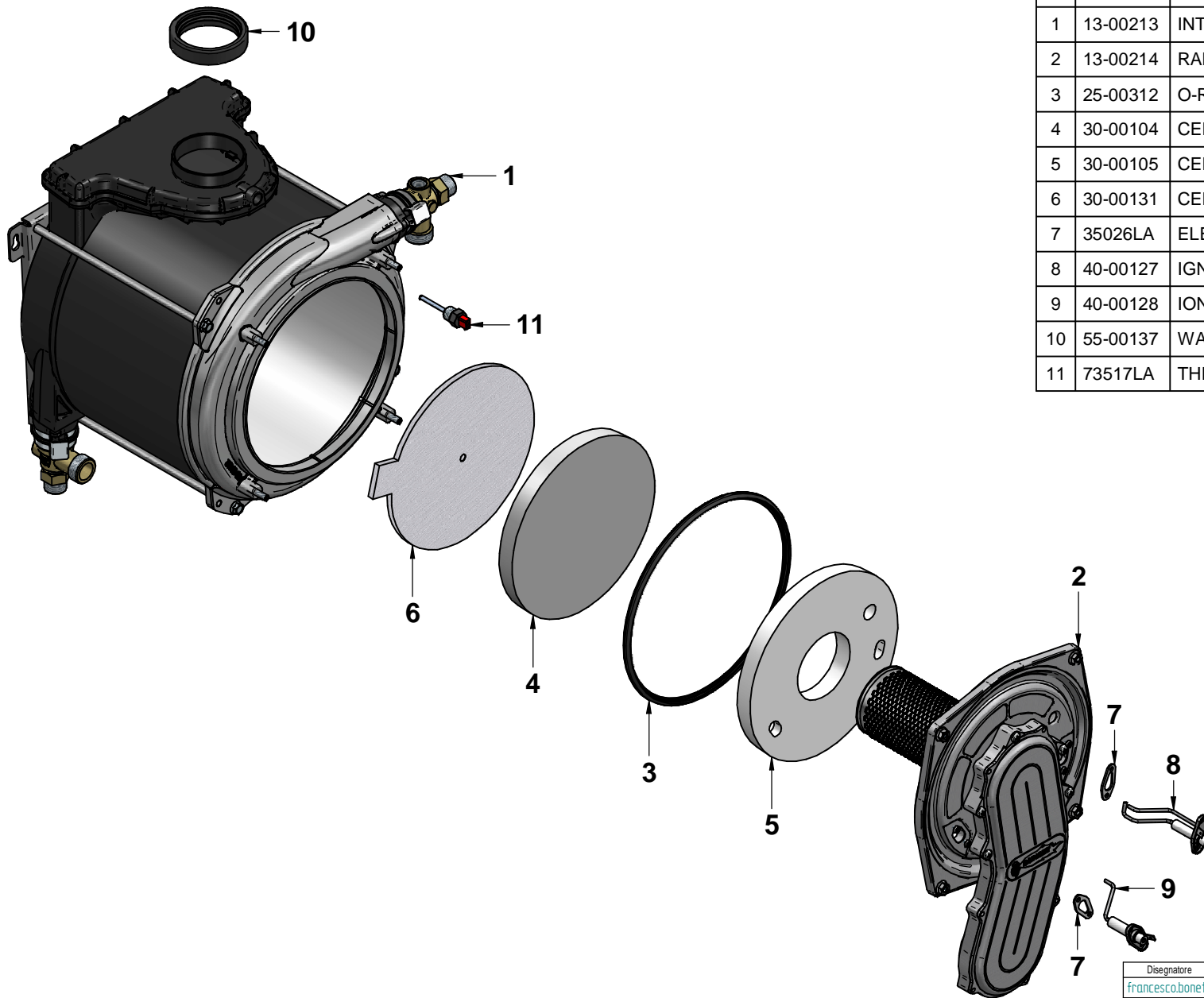
N°	Code	Description	Qty
1	12-01601	PIPE Ø8 BY-PASS	1
2	15-01295	CONTROL PANEL LEFT SIDE BRACKET	1
3	15-01296	CONTROL PANEL LEFT SIDE BRACKET	1
4	15-01553	ROOM-SEALED CHAMBER BOTTOM PLATE	1
5	20-00971	PIPE Ø14 D.H.W BY-PASS	1
6	25-00256	BY-PASS D.15	1
7	25-00269	PUMP/PUMP CONNECTION BODY OR 18,64x3,53 EPDM	2
8	25-00333	3 BAR PRESS.RELIEF VALVE 1/2"	1
9	25-00385	COLD WATER/HEATING FLOW CONNECTION	1
10	25-00405	DIVERTER VALVE PLASTIC BODY	1
11	25-00491	FILLING TAP	1
12	25-00498	WASHER Ø18.5x10x2 EPDM 70sh	1
13	25-00708	CIRCULATING PUMP YONOS PARAINIT 6B MSL/12 PWM	1
14	34001LA	BRASS BACKNUT 1/2" E.24x5	1
15	43003LA	WASHER Ø15x8x2 3/8" -AFM34	1
16	43145LA	DIVERTER VALVE O-RING M.PLEX	1
17	43150LA	EPDM O-RING 14X30 FOR BRASS CONNECTIONS M.PLEX	1
18	45-00048	2-WAY VALVE BY-PASS CONNECTION	1
19	54022LA	ZINC-PLATED STEEL FIXING CLIPMULTIPLEX	1
20	55-00149	FIXING CLIP Ø18 - PUMP INTMSL 12/5-1 WILO	1
21	55-00215	FIXING CLIP - STAINLESS STEEL	2
22	55-00218	OR 17.13 x Ø2.62 BY-PASS	1
23	55-00239	BY-PASS FIXING CLIP	1
24	55-00356	ANTIFREEZE PIPE Ø14x19R2K - 0133050183800	1
25	56009LA	NIPPLE 1/2"-1/2" E.22x35 RKA/GAS VALVE ELBOW	1
26	61004LP	FLOWSWITCH PISTON	1
27	61005LA	PISTON STOP	1
28	96030LA	SHUL AUTOMATIC AIR VENT VALVE 3/8"	1
29	96032LA	3-WAY VALVE ACTUATOR - ATVA 03 M.PLEX	1

Disegnatore	Rev.	data revisione	Autore revisione	Descrizione revisione
cristian.pazzagliani	01	14/03/2019	cristian.pazzagliani	Sostituito circolatore 25-00414 con 25-00708
Modificato				
cristian.pazzagliani				
Data di creazione	Scala	Materiale		Sp. Peso (Kg)
28/06/2017	125			806.823
Note				
Descrizione completa HYDRAULIC GROUP R2K 24-28-34 RAIN V3				
 tecnologia nel calore dal 1959				Codice 26-00485
				Revisione 01



N°	Code	Description	Qty
1	31244LA	FLWSWITCH MICRO LEAD 3111-03	1
2	31377LA	D.H.W/HEATING SENSOR CABLE	1
3	40-00077	PRINTED CIRCUIT BOARD CS R2	1
4	40-00097	WATER PRESSURE SWITCH CABLE	1
5	40-00103	POWER SUPPLY CABLE	1
6	40-00107	FRAME-PRINTED CIRCUIT BOARD CABLE	1
7	40-00215	SAFETY THERMOSTAT CABLE	1
8	40-00216	PCB/GAS VALVE/IGN.TRANSF.CABLE	1
9	40-00217	POWER SUPPLY/FAN CABLE	1
10	40-00218	EXHAUST FAN CABLE	1
11	40-00219	FLUE THERMOSTAT CABLE	1
12	40-00466	PUMP/3-WAY VALVE CABLE	1
13	40-00467	PWM CABLE/RETURN FLOW SENSOR	1
14	45-00002	CONTROL PANEL	1
15	45-00007	CONTROL PANEL FRONT COVER R2	1
16	45-00008	RUBBER BUTTON "+/-"	2
17	45-00009	RUBBER BUTTON "DHW/ON/HTG"	1
18	45-00036	CONTROL PANEL COVER R2 GRAY	1
19	64091LA	CONTROL PANEL TERMINAL BLOCK COVER	1
20	64092LA	CONTROL PANEL BACK PLATE	1

Disegnatore	Rev.	data revisione	Autore revisione	Descrizione revisione
riccardo.baiocchi	01	07/03/2019	crislian.pazzagliani	Revisionato per circolatore PARANT
Modificato				
crislian.pazzagliani				
Data di creazione	Scala	Materiale	Sp.	Peso (Kg)
12/02/2015	12			371.878
Note				
Descrizione completa				
CONTROL PANEL COMPLETE				
R2K 24-28-34				
 tecnologia nel calore dal 1959				Revisione
				01
Codice 41-00115				



N°	Code	Description	Qty
1	13-00213	INTEGRATED HEAT EXCHANGER BACK PANEL	1
2	13-00214	RADIANT HEAT EXCHANGER FRONT PANEL	1
3	25-00312	O-RING - BURNER DOOR	1
4	30-00104	CERAMIC FIBRE - COND. EXCHANGER - C0084TR021	1
5	30-00105	CERAMIC FIBRE-ROUND TYPE 20SP.	1
6	30-00131	CERAMIC AIRBED	1
7	35026LA	ELECTRODE WASHER	2
8	40-00127	IGNITION ELECTRODE W/CABLE	1
9	40-00128	IONISATION ELECTRODE W/CABLE	1
10	55-00137	WASHER 74x61 sp.17 EPDM	1
11	73517LA	THERMO FUSE 102øC RED ISTMQ 1/4" 4X45 - TSD2921	1

Disegnatore	Rev.	data revisione	Autore revisione	Descrizione revisione
francesco.bonetti				
Modificato				
cristian.pozzaglini				
Data di creazione	Scala	Materiale	Sp.	Peso (Kg)
20/05/2014	14			
Note				

Descrizione completa
CONDENSING EXCHANGER RADIANT
SK2 34

tecnologia nel calore dal 1959

Codice	Revisione
30-00137	00